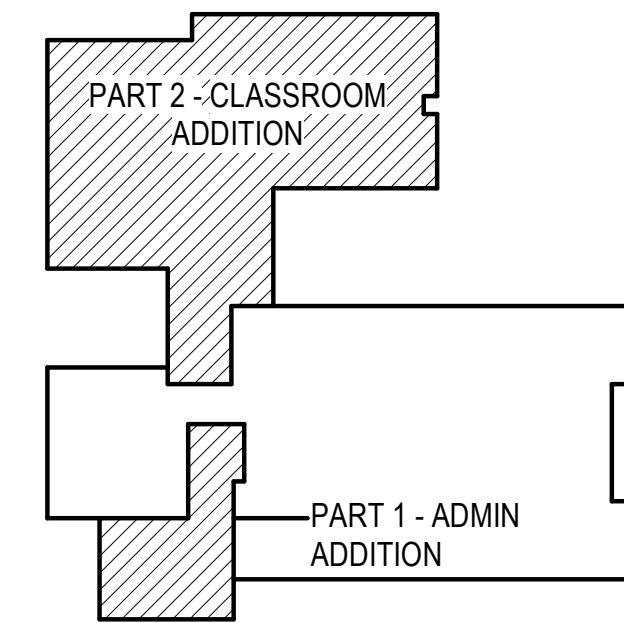


PART 2 - MECHANICAL FLOOR PLAN
SCALE: 1/8" = 1'-0"

PLAN NOTES:

- 1 EXISTING FLOOR GRILLE AND DUCTWORK BELOW FLOOR TO REMAIN. PROTECT DUCTWORK AND FLOOR GRILLE DURING CONSTRUCTION.
- 2 PROVIDE AND INSTALL ELECTRIC HEATER AS SPECIFIED. MOUNT HEATER AS HIGH AS POSSIBLE WITH WALL BRACKET. REFER TO DETAIL EM3.1 FOR TYPICAL INSTALLATION. PROVIDE WALL MOUNTED THERMOSTAT AND CONNECT TO CORRESPONDING HEATER.
- 3 PROVIDE AND INSTALL NEW VERTICAL AIR HANDLER AS SPECIFIED COMPLETE WITH DX COOLING COIL. REFER TO LARGE SCALE PLAN ON SHEET M2.1 FOR PIPING AND DUCTWORK CONNECTIONS. PROVIDE SPRING TYPE VIBRATION ISOLATORS AT EACH CORNER OF UNIT.
- 4 MOUNT NEW CONDENSING UNIT ON ROOF FOR GYM AIR HANDLER. RUN REFRIGERANT LINES THRU WALL AND DROP DOWN AT UNIT TO CONNECT. REFER TO LARGE SCALE PLAN ON SHEET M2.1. MOUNT CONDENSING UNIT ON PYRAMID TYPE SUPPORTS. REFER TO DETAIL NM3.1 FOR TYPICAL INSTALLATION AND PIPING CONNECTIONS.
- 5 PROVIDE AND INSTALL GAS FIRED DUCT FURNACE AS SPECIFIED. MOUNT UNIT ABOVE AIR HANDLER AND SUPPORT FROM ROOF STRUCTURE WITH 3/8" Dia. RODS. PROVIDE TRANSITIONS AS REQUIRED TO CONNECT TO SUPPLY AIR DUCTWORK. REFER TO DETAIL GM3.2 FOR TYPICAL INSTALLATION OF UNIT. REFER TO DETAIL OP3.1 FOR TYPICAL GAS LINE CONNECTION WITH SHUT-OFF VALVE AND FLEXIBLE HOSE.
- 6 MOUNT NEW THERMOSTAT AND/OR SENSOR ON WALL AND CONNECT TO NEW CORRESPONDING EQUIPMENT. PROVIDE LOCKING METAL COVER OVER CONTROL DEVICE.
- 7 MOUNT SR-1 REGISTERS WITH EXTRACTION DAMPER IN DUCTWORK AT 45 DEGREES DOWN FROM HORIZONTAL. REFER TO DETAIL FM3.1 FOR TYPICAL INSTALLATION.
- 8 PROVIDE OUTSIDE AIR LOUVER AND RETURN AIR GRILLE AS SPECIFIED WITH SLEEVE THRU WALL FOR RELIEF AIR. MOUNT AS HIGH AS POSSIBLE. REFER TO DETAIL KM3.2 FOR TYPICAL RELIEF AIR LOUVER INSTALLATION.
- 9 MOUNT ROOF TOP UNIT ON ROOF CURB AND DROP SUPPLY AND RETURN DUCTS DOWN THRU ROOF. REFER TO DETAIL DM3.1 TYPICAL UNIT MOUNTING AND TO DETAIL LP3.1 FOR TYPICAL GAS LINE CONNECTION WITH SHUT-OFF VALVE, PRESSURE REGULATOR, AND FLEXIBLE HOSE.
- 10 MOUNT NEW EXHAUST FAN AS SPECIFIED IN CEILING. RISE 6" Dia. DUCT UP THRU ROOF WITH ROOF CAP. REFER TO DETAIL CM3.1 FOR TYPICAL INSTALLATION.
- 11 MOUNT NEW EXHAUST FAN AS SPECIFIED ON ROOF WITH ROOF CURB. DROP DUCT DOWN THRU ROOF AND CONNECT TO CEILING GRILLES. REFER TO DETAIL DM3.1 FOR TYPICAL INSTALLATION.
- 12 PROVIDE AND INSTALL MIN-SPLIT SYSTEM AS SPECIFIED. MOUNT INDOOR UNIT ON WALL AS HIGH AS POSSIBLE. COORDINATE ACTUAL LOCATION WITH OTHER EQUIPMENT IN ROOM. (REFER TO ELECTRICAL DRAWINGS). LOCATE OUTDOOR UNIT ON ROOF WITH PYRAMID TYPE SUPPORTS. INDOOR UNIT TO NEW SUPPLIED WITH CONDENSATE PUMP. RISE REFRIGERANT AND DRAIN LINES UP THRU ROOF. REFER TO DETAIL CM3.3 FOR PIPING THRU ROOF AND TO DETAIL JM3.2 FOR TYPICAL INSTALLATION OF UNIT.
- 13 MOUNT NEW THERMOSTAT AND/OR SENSOR ON WALL AND CONNECT TO CORRESPONDING ROOF TOP EQUIPMENT.
- 14 MOUNT RETURN GRILLE AT 6" ABOVE FLOOR. PROVIDE SLEEVE THRU WALL AND TRANSITION AS REQUIRED TO CONNECT TO AIR HANDLER MIXING BOX.

KEY PLAN



GENERAL NOTES:

- A- THE CONTRACTOR SHALL CHECK AND VERIFY ALL DIMENSIONS AND CONNECTIONS ON THE JOB SITE. ALL WORK SHALL BE EXECUTED FROM MEASUREMENTS TAKEN AT THE SITE.
- B- THE MECHANICAL CONTRACTOR SHALL BE RESPONSIBLE TO INSURE PROPER CORD CLEARANCES FOR ELECTRICAL AND MECHANICAL ACCESS WHEN INSTALLING ANY EQUIPMENT SUPPLIED BY THE MECHANICAL CONTRACTOR.
- C- IT IS CRITICAL THAT THIS CONTRACTOR COORDINATE EQUIPMENT LOCATIONS WITH PIPING, DUCTWORK, ELECTRICAL CONDUIT AND BUILDING STRUCTURE TO INSURE CODE COMPLIANCE.
- D- CEILING DIFFUSERS ARE SHOWN IN APPROXIMATE LOCATIONS. REFER TO LIGHTING PLANS AND REFLECTED CEILING PLAN FOR EXACT LOCATIONS.
- E- DUCT DIMENSIONS CALLED OUT ON DRAWINGS ARE INSIDE FREE AREA DIMENSIONS. ACOUSTICAL DUCT LINER ARE TO BE ADDED TO OVERALL MEASUREMENTS.
- F- ALL DUCTWORK AND PIPING WHICH PASSES THRU FIRE RATED WALLS TO BE FIRE STOPPED WITH APPROVED FOAM OR SEALANT. REFER TO SPECIFICATIONS FOR APPROVED MANUFACTURERS.

ORIGINAL DRAWING SIGNED BY: DWAYNE C. SUDWEEKS
DATE ORIGINAL SIGNED: April 12, 2018 ORIGINAL ON FILE AT:
ENGINEERED SYSTEMS ASSOCIATES 1355 EAST CENTER,
POCATELLO, IDAHO 83201

Engineered Systems Associates
1355 EAST CENTER
POCATELLO, IDAHO 83201
PHONE: (208) 233-0501
FAX: (208) 233-0529
EMAIL: esa@engsystems.com
ESA JOB NUMBER: 18072

PROJECT:
ADDITION & REMODEL FOR:
HARWOOD ELEMENTARY
JEFFERSON JOINT SCHOOL DISTRICT NO. 251
200 W 3RD N, RIGBY, IDAHO 83442

REVISIONS:

| NO. | DESCRIPTION |
|-----|-------------|
| | |
| | |
| | |
| | |
| | |

PROJECT NO.: 16070
DATE: APRIL 2019
DRAWN BY: M JENSEN
CHECKED BY: D SUDWEEKS
DRAWING NO.:

nbw architects p.a.
 ARCHITECTURE / PLANNING / INTERIORS
 SCOTT L NELSON A.I.A. KEVIN R BODILY A.I.A. JAMES H WYATT A.I.A.
 990 JOHN RIBBA PARKWAY P.O. BOX 2212 - IDAHO FALLS, IDAHO 83402-2212
 (208) 208-522 8778 (208) 522-8785 (208) 522-8785

ADDITION & REMODEL FOR:
HARWOOD ELEMENTARY
 JEFFERSON JOINT SCHOOL DISTRICT NO. 251
 200 W 3RD N, RIGBY, IDAHO 83442
PART 2 - MECHANICAL FLOOR PLAN

SHEET TITLE:

M1.2